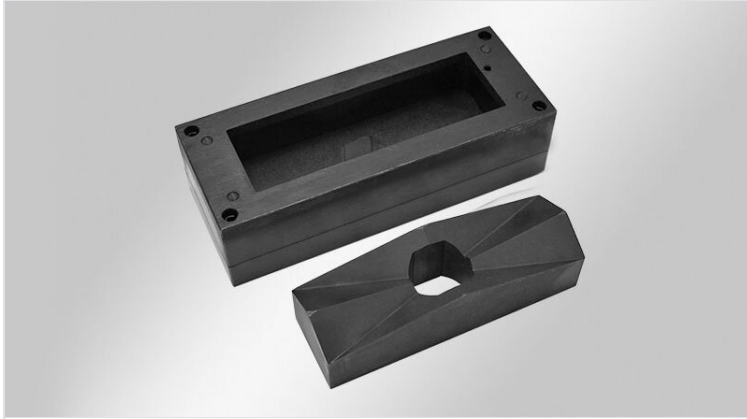


Rectangular & square punches

sized for heavy multi-pin industrial connectors and icotek cable entry systems



Rectangular and square punches and dies make it easy to punch holes into stainless steel (V2A versions), mild steel, aluminium or plastics with a max. sheet thickness of 2 mm. Available for cut-outs sizes of 10-, 16-, and 24- multi-pin heavy industrial connectors and also for numerous special cut-outs. Therefore, the punches are suitable for most icotek cable entry systems. Centre punches are integrated in the die for exact drilling of mounting holes.

The punches are for hydraulic operation only.

Scope of delivery:

- Punch, die and draw stud
- robust plastic storage case

Note: Punch 125 x 125 mm (order no. 80063) is only to be used with hydraulic foot pump (order no. 80002).

Specifications

Material Steel, hardened and burnished

Advantages & benefits

- Centre punches for exact drilling of mounting holes
- Robust plastic storage case
- Suitable for hand hydraulic punch driver by icotek and other manufacturers

Product types & sizes

Punch 24



Part No.	80053	Punching material	Plastic, Stahl (St)
EAN	4251269316289	Max. wall thickness	2 mm
Package quantity	1		
Suitable for cable entry systems:	KEL-ER 24, KEL 24, KEL-U 24, KEL-FA 24, KEL-FG A, KEL-FG-ER A, KEL-QUICK 24, KEL-QTA 24, KEL-BES 24, KEL-BES-S 24, KEL-DPZ 24, KEL-DPU 24, KEL-DPU-HD 24, KEL-DP 24		
Number of centre punches	4		
Cut-out size	112 x 36 mm		
Thread UNF	19 mm		

Punch 24 V2A

Part No.	80153	Punching material	Stainless steel (V2A)
EAN	4251269316	Max. wall thickness	2 mm
Package quantity	1		
Suitable for cable entry systems:	KEL-ER 24, KEL 24, KEL-U 24, KEL-FA 24, KEL-FG A, KEL-FG-ER A, KEL-QUICK 24, KEL-QTA 24, KEL-BES 24, KEL-BES-S 24, KEL-DPZ 24, KEL-DPU 24, KEL-DPU-HD 24, KEL-DP 24		
Number of centre punches	4		
Cut-out size	112 × 36 mm		
Thread UNF	19 mm		

Punch 24-XL

Part No.	80054	Punching material	Plastic, Stahl (St)
EAN	4251269316	Max. wall thickness	2 mm
Package quantity	1		
Suitable for cable entry systems:	KEL-ER 24, KEL 24, KEL-U 24, KEL-FA 24, KEL-FG A, KEL-FG-ER A, KEL-QUICK 24, KEL-BES 24, KEL-BES-S 24, KEL-DPZ 24, KEL-DPU 24, KEL-DPU-HD 24		
Number of centre punches	4		
Cut-out size	112 × 46 mm		
Thread UNF	19 mm		

Punch 24-XL V2A



Part No.	80154	Punching	Stainless
EAN	4251269316	material	steel (V2A)
	463	Max. wall	2 mm
Package	1	thickness	
quantity			
Suitable for	KEL-ER 24,		
cable entry	KEL 24, KEL-		
systems:	U 24, KEL-FA		
	24, KEL-FG		
	A, KEL-FG-ER		
	A, KEL-		
	QUICK 24,		
	KEL-BES 24,		
	KEL-BES-S		
	24, KEL-DPZ		
	24, KEL-DPU		
	24, KEL-DPU-		
	HD 24		
Number of	4		
centre			
punches			
Cut-out size	112 × 46 mm		
Thread UNF	19 mm		

Punch 16



Part No.	80052	Punching	Plastic, Stahl
EAN	4251269316	material	(St)
	272	Max. wall	2 mm
Package	1	thickness	
quantity			
Suitable for	KEL-ER 16,		
cable entry	KEL 16, KEL-		
systems:	U 16, KEL-FA		
	16, KEL-		
	QUICK 16,		
	KEL-BES 16,		
	KEL-BES-S		
	16, KEL-DPZ		
	16, KEL-DP		
	16		
Number of	4		
centre			
punches			
Cut-out size	86 × 36 mm		
Thread UNF	19 mm		

Punch 16 V2A

Part No.	80152	Punching material	Stainless steel (V2A)
EAN	4251269316449	Max. wall thickness	2 mm
Package quantity	1		
Suitable for cable entry systems:	KEL-ER 16, KEL 16, KEL-U 16, KEL-FA 16, KEL-QUICK 16, KEL-BES 16, KEL-BES-S 16, KEL-DPZ 16, KEL-DP 16		
Number of centre punches	4		
Cut-out size	86 × 36 mm		
Thread UNF	19 mm		

Punch 10

Part No.	80051	Punching material	Stahl (St), Plastic
EAN	4251269316265	Max. wall thickness	2 mm
Package quantity	1		
Suitable for cable entry systems:	KEL-ER 10, KEL 10, KEL-U 10, KEL-FA 10, KEL-QUICK 10, KEL-QTA 10, KEL-BES 10, KEL-BES-S 10, KEL-DPZ 10, KEL-DP 10		
Number of centre punches	4		
Cut-out size	65 × 36 mm		
Thread UNF	19 mm		

Punch 10 V2A



Part No.	80151	Punching	Stainless
EAN	4251269316	material	steel (V2A)
	432	Max. wall	2 mm
Package	1	thickness	
quantity			
Suitable for	KEL-ER 10,		
cable entry	KEL 10, KEL-		
systems:	U 10, KEL-FA		
	10, KEL-		
	QUICK 10,		
	KEL-QTA 10,		
	KEL-BES 10,		
	KEL-BES-S		
	10, KEL-DPZ		
	10, KEL-DP		
	10		
Number of	4		
centre			
punches			
Cut-out size	65 × 36 mm		
Thread UNF	19 mm		

Punch 6



Part No.	80062	Punching	Plastic, Stahl
EAN	4251269319	material	(St)
	013	Max. wall	2 mm
Package	1	thickness	
quantity			
Suitable for	KEL-DPZ 6,		
cable entry	KEL-DP 6		
systems:			
Number of	4		
centre			
punches			
Cut-out size	52 × 36 mm		
Thread UNF	19 mm		

Punch 6 V2A



Part No.	80149	Punching	Stainless
EAN	4251269321	material	steel (V2A)
	542	Max. wall	2 mm
Package	1	thickness	
quantity			
Suitable for	KEL-DPZ 6,		
cable entry	KEL-DP 6		
systems:			
Number of	-		
centre			
punches			
Cut-out size	52 x 36 mm		
Thread UNF	19 mm		

Punch B



Part No.	80049	Punching	Plastic, Stahl
EAN	4251269331	material	(St)
	831	Max. wall	2 mm
Package	1	thickness	
quantity			
Suitable for	KEL-ER-B,		
cable entry	KEL-B, KEL-		
systems:	U-B, KEL-FG-		
	B, KEL-FG-		
	ER-B, KEL-		
	QUICK-B,		
	KEL-QTA-B,		
	KEL-DPZ-B		
Number of	4		
centre			
punches			
Cut-out size	46 x 46 mm		
Thread UNF	19 mm		

Punch B

Part No.	80050	Punching material	Plastic, Stahl (St)
EAN	4251269316258	Max. wall thickness	2 mm
Package quantity	1		
Suitable for cable entry systems:	KEL-ER-B, KEL-B, KEL-U-B, KEL-FG-B, KEL-FG-ER-B, KEL-QUICK-B, KEL-QTA-B, KEL-DPZ-B		
Number of centre punches	-		
Cut-out size	46 × 46 mm		
Thread UNF	19 mm		

Punch B V2A

Part No.	80150	Punching material	Stainless steel (V2A)
EAN	4251269316425	Max. wall thickness	2 mm
Package quantity	1		
Suitable for cable entry systems:	KEL-ER-B, KEL-B, KEL-U-B, KEL-FG-B, KEL-FG-ER-B, KEL-QUICK-B, KEL-QTA-B, KEL-DPZ-B		
Number of centre punches	-		
Cut-out size	46 × 46 mm		
Thread UNF	19 mm		

Punch E5

Part No.	80058	Punching	Plastic, Stahl
EAN	4251269316	material	(St)
	333	Max. wall	2 mm
Package	1	thickness	
quantity			
Suitable for	KEL-ER-E5,		
cable entry	KEL-E5, KEL-		
systems:	FG-E5, KEL-		
	FG-ER-E5,		
	KEL-QUICK-		
	E5, KEL-FL 4		
Number of	2		
centre			
punches			
Cut-out size	112 × 24 mm		
Thread UNF	19 mm		

Punch E4

Part No.	80057	Punching	Plastic, Stahl
EAN	4251269316	material	(St)
	326	Max. wall	2 mm
Package	1	thickness	
quantity			
Suitable for	KEL-ER-E4,		
cable entry	KEL-E4, KEL-		
systems:	QUICK-E4,		
	KEL-FL 3		
Number of	2		
centre			
punches			
Cut-out size	86 × 24 mm		
Thread UNF	19 mm		

Punch E3

Part No.	80056	Punching material	Plastic, Stahl (St)
EAN	4251269316319	Max. wall thickness	2 mm
Package quantity	1		
Suitable for cable entry systems:	KEL-ER-E3, KEL-E3, KEL-FG-E3, KEL-FG-ER-E3, KEL-QUICK-E3, KEL-FL 2		
Number of centre punches	2		
Cut-out size	65 × 24 mm		
Thread UNF	19 mm		

Punch E2

Part No.	80055	Punching material	Plastic, Stahl (St)
EAN	4251269316302	Max. wall thickness	2 mm
Package quantity	1		
Suitable for cable entry systems:	KEL-ER-E2, KEL-E2, KEL-FG-E2, KEL-FG-ER-E2, KEL-QUICK-E2, KEL-FL 1		
Number of centre punches	2		
Cut-out size	43 × 24 mm		
Thread UNF	19 mm		

Punch E1



Part No.	80075	Punching	Plastic, Stahl
EAN	4251269332	material	(St)
	517	Max. wall	2 mm
Package	1	thickness	
quantity			
Suitable for	KEL-E1		
cable entry			
systems:			
Number of	2		
centre			
punches			
Cut-out size	21 x 27 mm		
Thread UNF	19 mm		

Punch 66x112



Part No.	80061	Max. wall	2 mm
EAN	4251269318	thickness	
	757		
Package	1		
quantity			
Suitable for	KEL 24-E		
cable entry			
systems:			
Number of	-		
centre			
punches			
Thread UNF	19 mm		
Punching	Plastic, Stahl		
material	(St)		

Punch 125×125

Part No. **80063**
EAN **4251269322709**
Package quantity **1**
Number of centre punches -
Thread UNF **19 mm**
Punching material **Plastic, Stahl (St)**
Max. wall thickness **2 mm**



Punch 68×68

Part No. **80064**
EAN
Package quantity **1**
Number of centre punches -
Thread UNF **19 mm**
Punching material **Plastic, Stahl (St)**
Max. wall thickness **2 mm**



Punch 92x92



Part No. **80060**
EAN **4251269318**
252
Package quantity **1**
Number of centre punches -
Thread UNF **19 mm**
Punching material **Plastic, Stahl (St)**
Max. wall thickness **2 mm**

Punch 22x45



Part No. **80059**
EAN **4251269319**
174
Package quantity **1**
Number of centre punches -
Thread UNF **19 mm**
Punching material **Plastic, Stahl (St)**
Max. wall thickness **2 mm**